

JLG 1350SJP BOOMLIFT SPECIFICATIONS

DETAILS:

Dominate the job site with the JLG 1350SJP Ultra telescopic boom lift. When you're working twelve stories high, these telescoping lifts were designed for rugged job sites like steel mills, chemical plants, airports, shipyards, and more. And their exclusive controlled arc regulates speeds at the edges of the work envelope, so you feel the

KEY SPECS:

Platform Height: 135 ft / 41.15 m

Platform Capacity – Restricted: 1000 lb / 453.59 kg

Platform Capacity – Unrestricted: 500 lb / 226.80 kg

Horizontal Outreach: 80 ft / 24.38 m

KEY FEATURES:

Ground to 135 ft up in 95 seconds

Strong 100,000-psi steel and a dual 1,000 / 500 lb capacity give you stability and capacity

Equipped with a fuel-efficient Tier 4 engine

Equipment Type

Aerial Lifts / Boom Lifts

SPECIFICATIONS:

Auxiliary Power:

12 Volts DC

Capacity – Fuel Tank:

31 gal. / 117.35 L

Engine Type – Diesel:

DEUTZ TCD2.9L4 Tier 4 Final 74.2 Hp

Axle Oscillation:

1 ft / 0.3 m

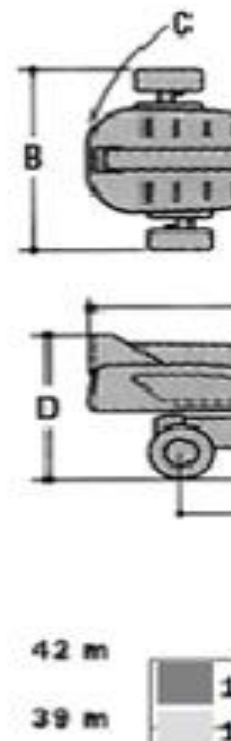
Drive Speed – 4WD:

3.3 mph / 5.23 km/h

Grade-ability – 4WD:

45%

Platform Capacity – Restricted:



1000 lb / 453.59 kg

Platform Capacity – Unrestricted:
500 lb / 226.80 kg

Swing:
360 Degrees

Swing Type:
Continuous

Turning Radius – Outside (axles extended):
19 ft 4 in. / 5.89 m

Turning Radius – Outside (axles retracted):
22 ft 6 in. / 6.86 m

Jib – Range of Articulation:
130 Degrees

Transport Length:
38 ft 11 in. / 11.86 m

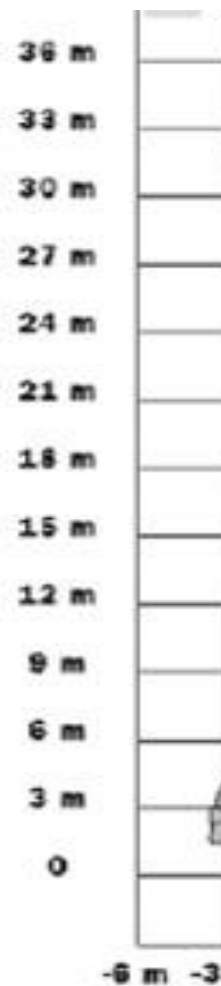
Ground Clearance:
1 ft / 0.3 m

Horizontal Jib Rotation:
180 Degrees

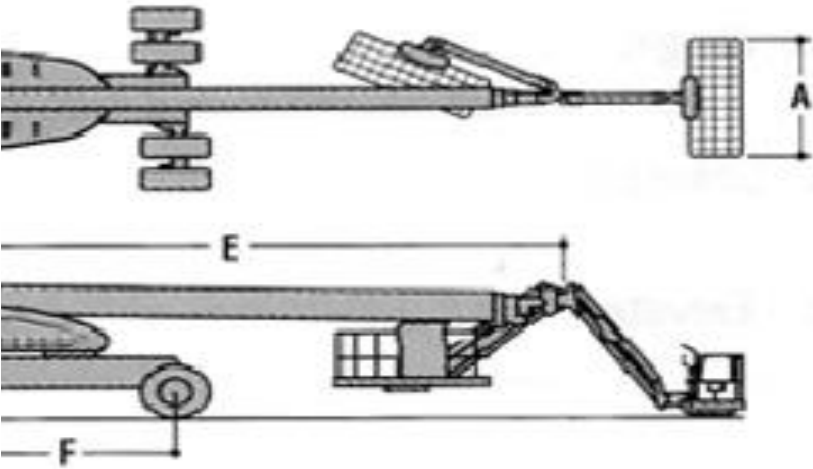
Platform Height:
135 ft / 41.15 m

Horizontal Outreach:
80 ft / 24.38 m

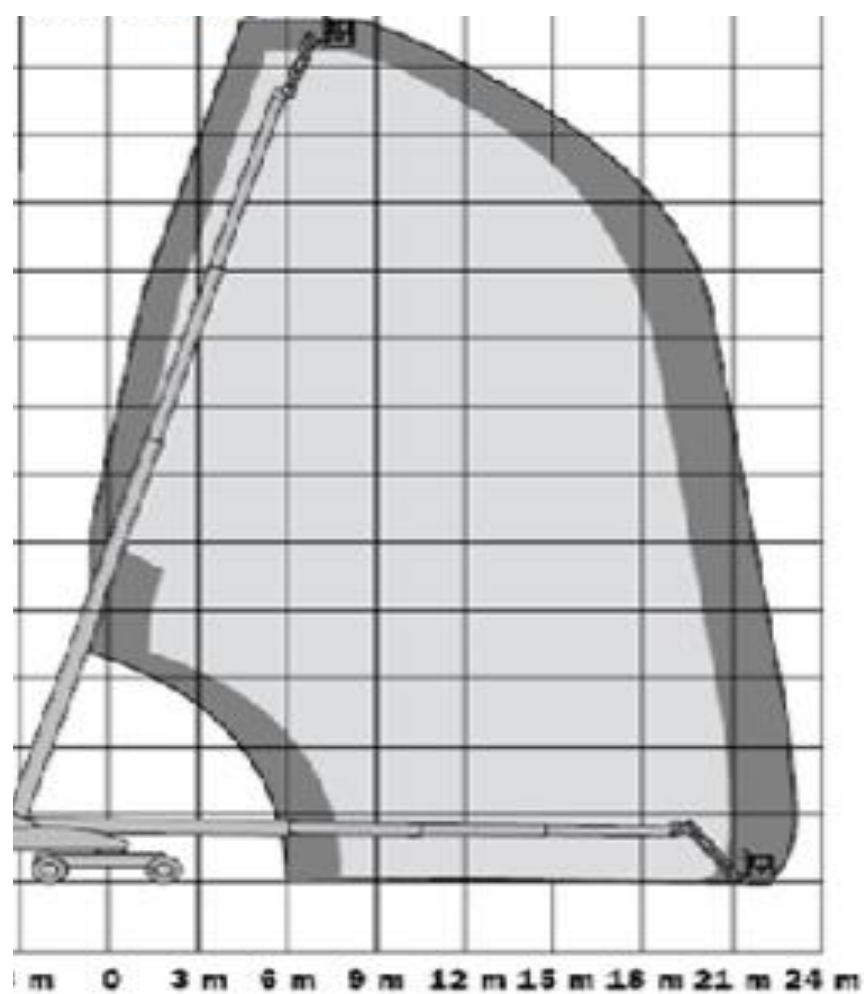
Machine Weight:
45000 lb / 20411.66 kg



ries high or more, you want a telescopic boom lift that’s built to perform, and that’s exactly what you ge
yards and heavy construction. They feature an ultra strong 100,000 PSI steel boom, giving you the confic



2005/P - 230 kg							
2005/P - 450 kg							



dence and support you need to handle 1,000 lb of capacity